



BARRACUDA

Barracuda programmer Installation Guide Version 2.00 (September 2018)

Barracuda programmer System Requirements:

- External power supply (not included):
9 to 24V AC to DC [] 5.5x2.1mm center positive plug []
- Windows XP/7/8/10 operating PC/Laptop
- USB 2.0/3.0 port

I. Base software installation

1. [Download and extract BarracudaInstallv0x.rar](#) (file is archived requires WinRar or compatible with it archive software like 7s, WinZip, etc...)



Index News Products **Downloads** Price list Forum Distributors Events Contacts

Barracuda Downloads

File	Version	Date	Size	Notes
BarracudaInstallv02.rar	2.0	01.09.2018	129Mb	Contains Barracuda base software ver. 2.0, driver ver. 1.0 and Help files ver. 1.0
Help files	1.0	01.09.2018	119Mb	Barracuda Help files ver 1.0
DriverV1.rar	1.0	01.09.2018	4.8Mb	Barracuda drivers ver. 1 AllWin Digitally Signed


Barracuda Driver Windows OS specific requirements:
Win7 requires Microsoft security update [KB3033929](#).
WinVista requires Microsoft security update [KB2763624](#)



Copyright ©2014 Scorpio-Ly. All rights reserved.

2. Navigate to the extracted location and start Barracuda Install v02.exe

Barracuda Install v02 > Barracuda Install v02

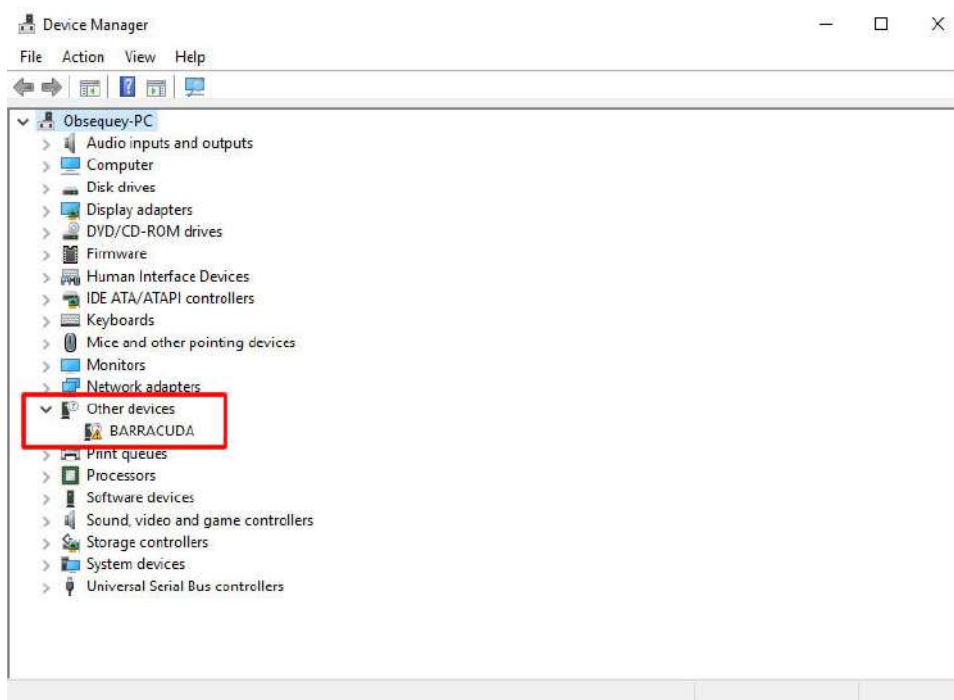
Name	Date modified	Type	Size
 Barracuda Install v02.exe	8/23/2018 2:43 PM	Application	125,779 KB

3. Follow the instructions that appear in the window

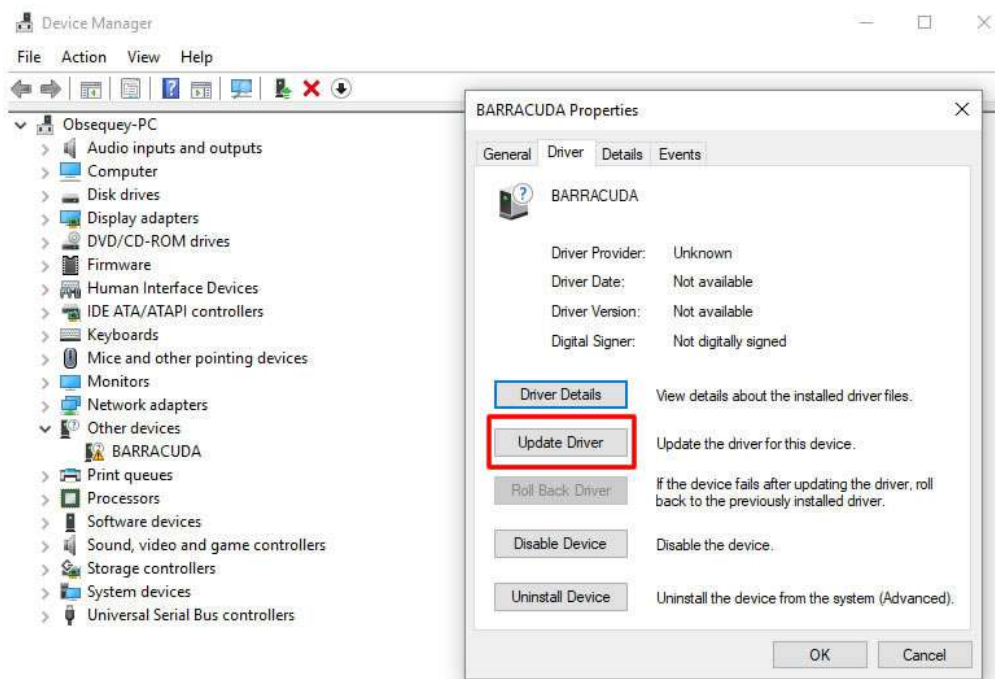
4. Barracuda help files are in Adobe Acrobat format (*.pdf) in order to view them you need to have Adobe Acrobat Reader installed (<https://get.adobe.com/reader/>).

II. Driver Installation

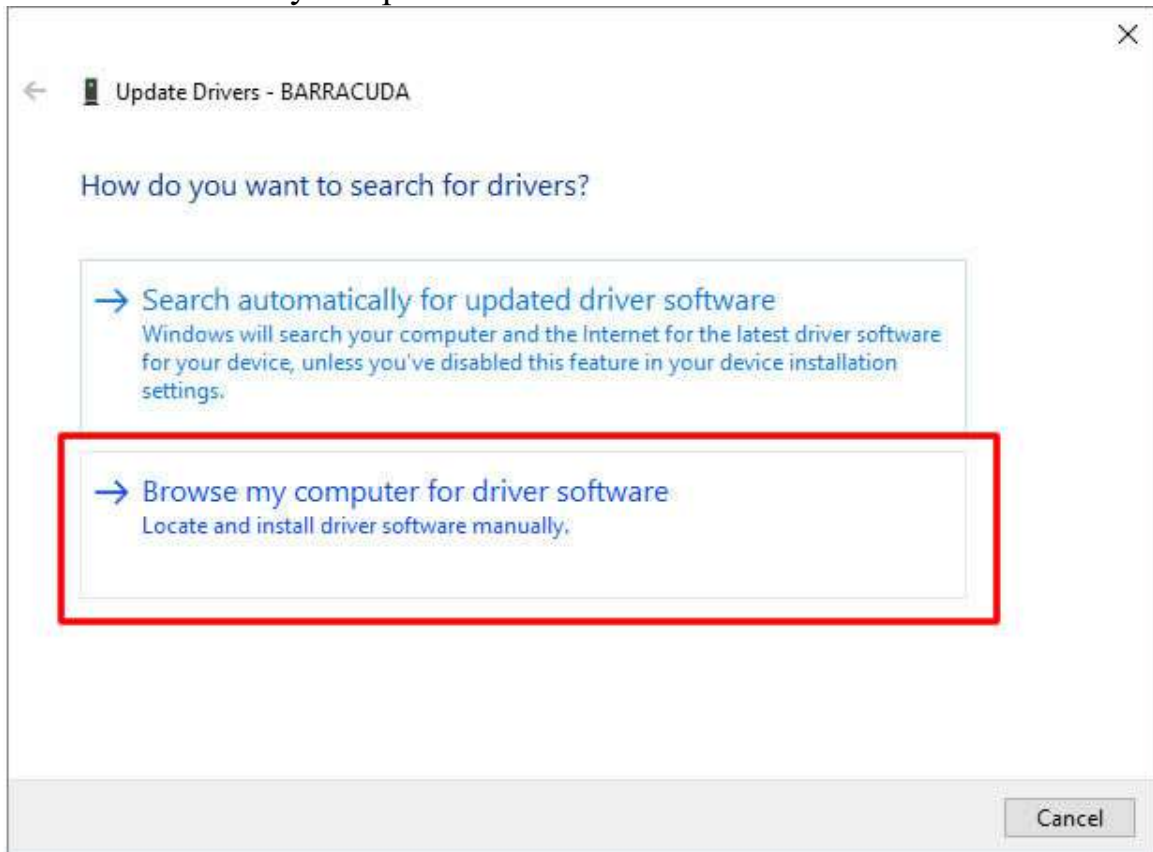
1. Connect Barracuda programmer to PC USB port
2. Connect Barracuda programmer to external power supply.
3. Open Windows Device manager and expand the Universal Serial Bus controllers or Other Devices tab (depends on Windows version)
4. Select Barracuda in device manager



5. Properties->Driver->Update Driver

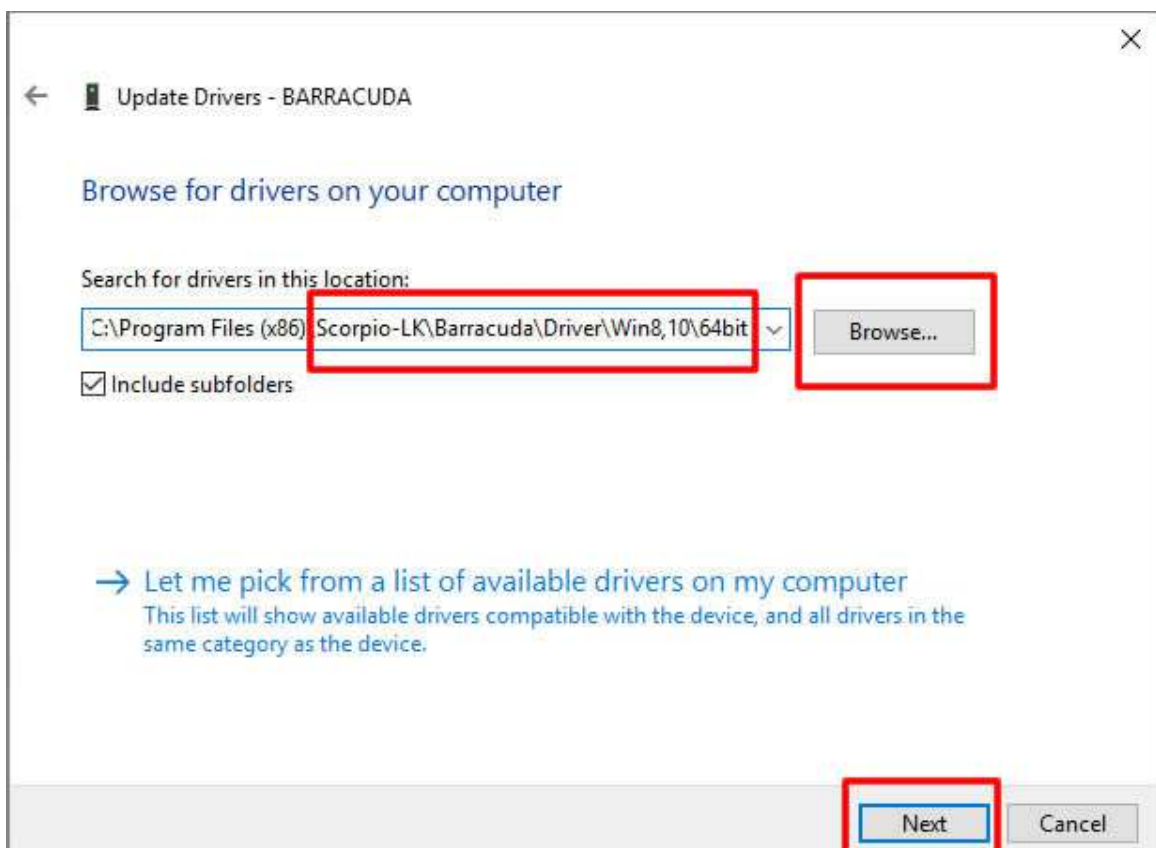


6. Select Browse my computer for driver software

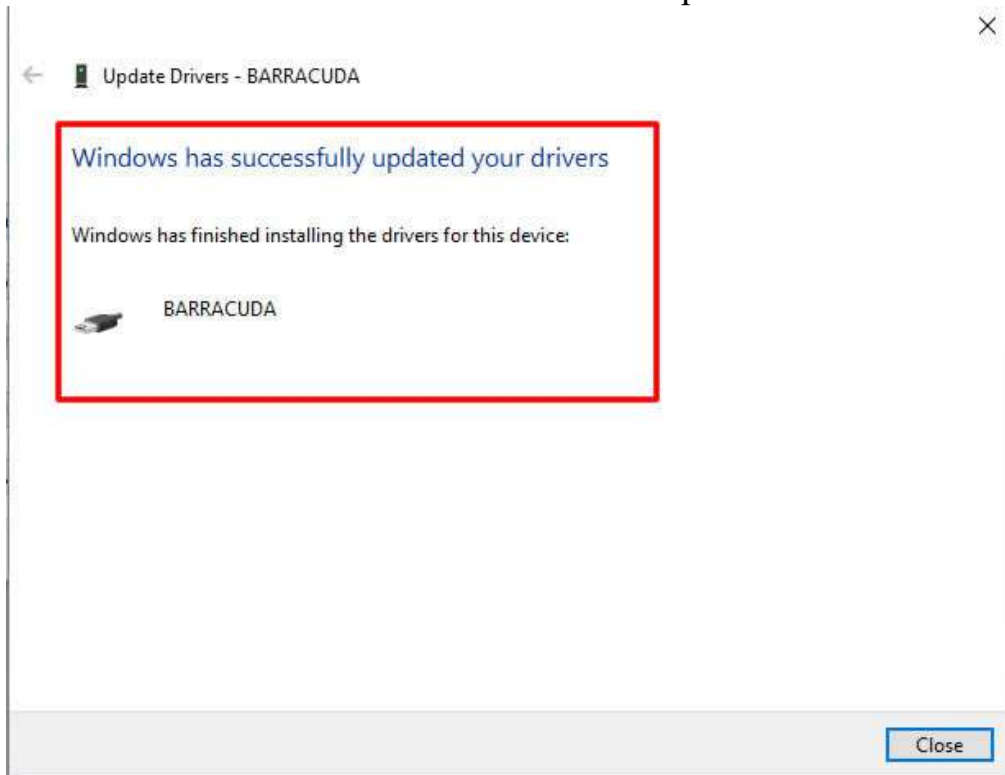


8. Navigate to Barracuda installation directory (default location C:\Program Files (x86)\Scorpio-LK\Barracuda)

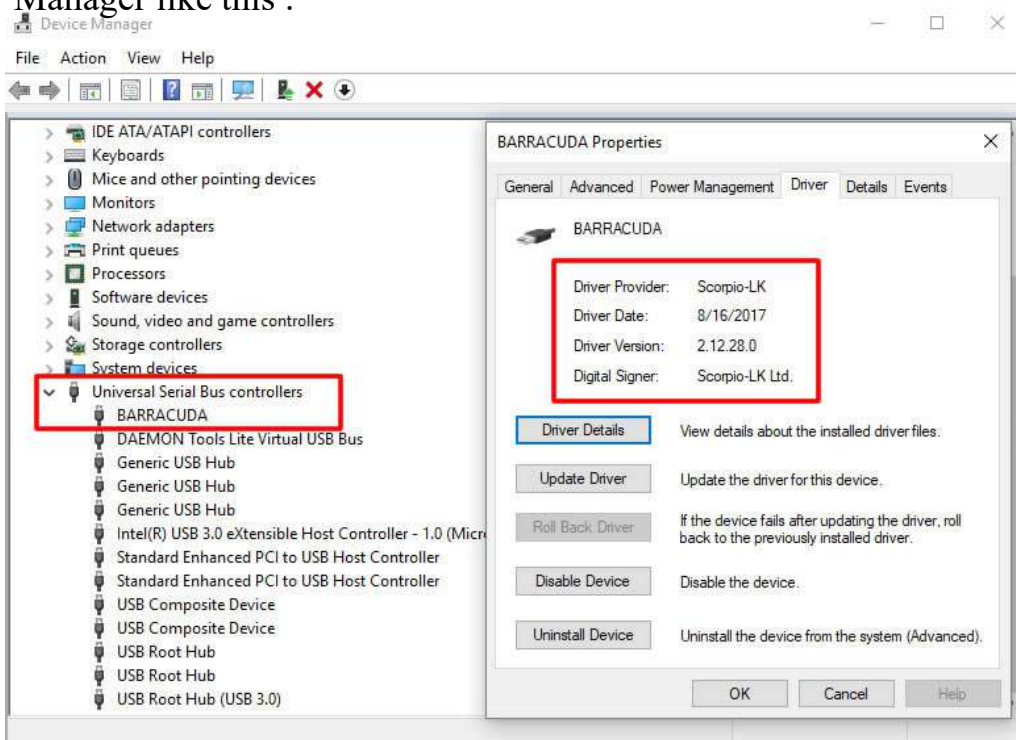
9. Select folder according to your OS (Example for Windows 10 64bit path is : ../Driver/Win8,10/64bit)



10. Click Next and Windows will finalize the process.



11. If steps from 1 to 10 have been followed Barracuda will appear in Device Manager like this :



Notes:

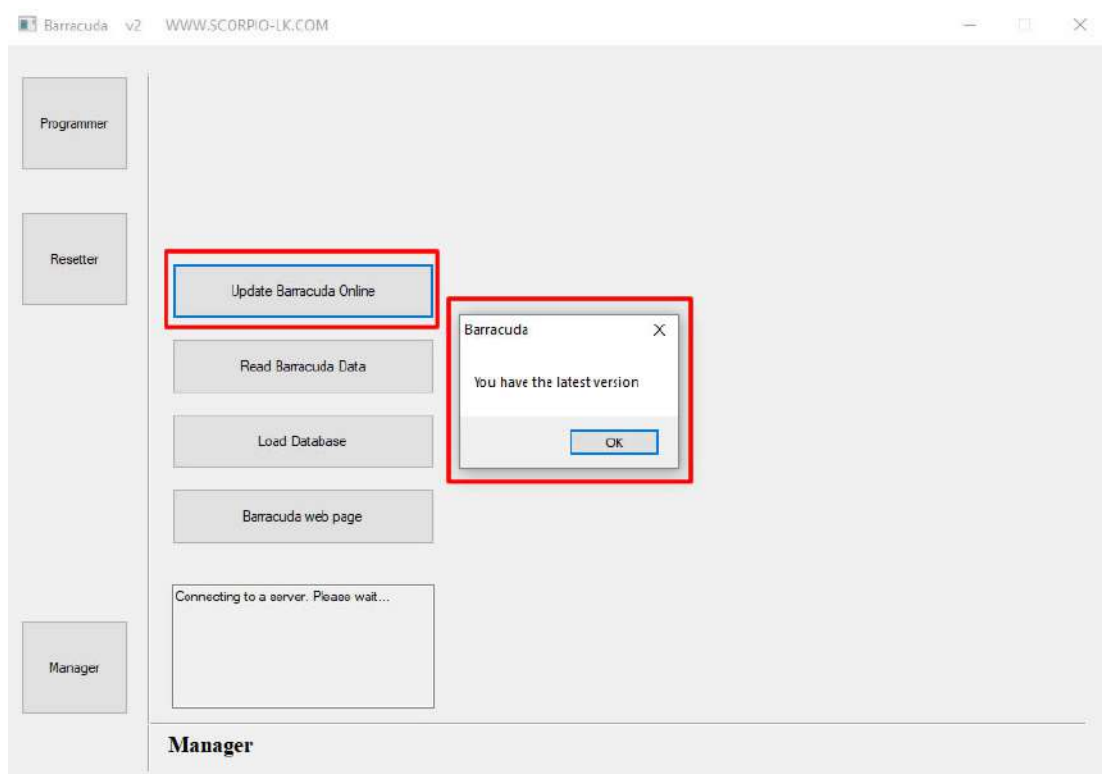
Barracuda Driver Windows OS specific requirements:

Win 7 requires Microsoft security update [KB3033929](#),

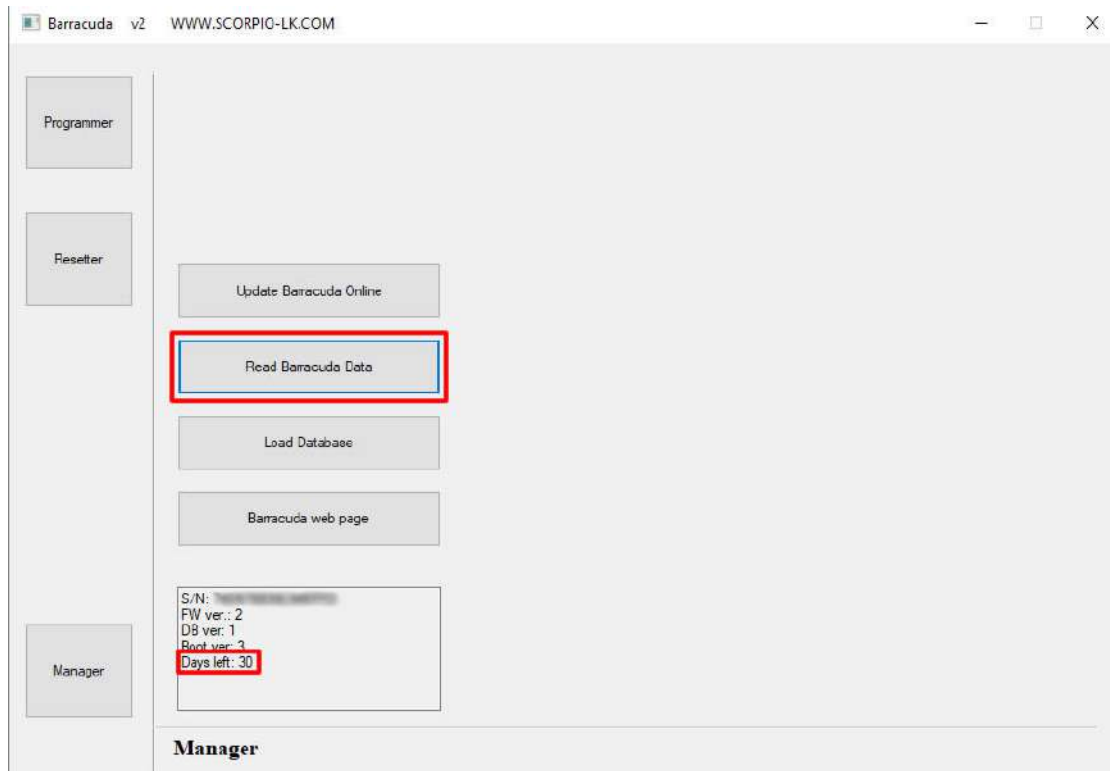
Win Vista requires Microsoft security update [KB2763674](#)

4. If there is new update, you will be prompted to update, follow the onscreen instructions.

5. If there is no new update a message (You have latest version) will appear



6. Barracuda requires connection to our servers at least once every 30 days, in software a counter provides information when a connection is required. After successful connection it reverts to 30 days.



IV. Database update

1. [Download and extract Database](#) (file is archived requires WinRar or compatible with it archive software like 7s, WinZip, etc...)
2. Connect Barracuda to PC and start Barracuda.exe
3. Select Manager, press Load Database and navigate to the *.dbd file extracted in step 1. and open it. The process takes several minutes. Don't close the software or disconnect Barracuda during the process. Once finished you will receive a message confirming the update.
4. With Read Barracuda Data button you can always check the current Database (DB) version.

V. Help Files Update

1. [Download and extract Help Files AIO or Help Files update](#) * executable file (file is SFX requires WinRar or compatible with it archive software like 7s, WinZip, etc...)
2. Run the downloaded executable file and it will extract and place the help files in the default Barracuda software installation directory. If you installed Barracuda software in a different directory enter the correct path or extract anywhere then manually copy/paste the files.

***Note** Help Files AIO (All-In-One) contains all images and PDF files to date
Help Files update contains only newly added or updated images and PDF files

VI. Appendix

1. If you encounter an issue with Barracuda or have a question write us at scorpioik@gmail.com or office@scorpio-lk.com or post a topic on our forum (forum.scorpio-lk.com)
2. You can register at our forum (forum.scorpio-lk.com) by using either Barracuda or Tango serial number.
3. If you have existing forum account it is highly advised to mail us your Barracuda serial number, so we can facilitate faster support when it is required.

